

User's Guide

KeyLlama PS/2
KeyLlama PS/2 Forensic

with USB Download Accelerator



	Page
Introduction	2
Recording	3
Reading the Data (Text Menu)	3
Reading the Data (Download Accelerator)	7
Clock Configuration (Forensic Only)	9
National Keyboard Options	9

Introduction

KeyLlama PS/2

The KeyLlama PS/2 records everything typed on a PS/2 keyboard. It stores the data to internal flash memory. The data may be retrieved through a built-in menu program or with the included USB Download Accelerator. This hardware keylogger is 100% stealthy and no software or drivers are required.

Features

- Huge memory
- Advanced text menu for viewing recorded keystroke data, includes Net Detective, Phrase Search, Key Filtering, Unplug Counter and more!
- Super fast memory contents retrieve (125 kB/s) with the USB Download Accelerator (included with device)
- Compatible with all PS/2 keyboards
- Stealthy
- No software needed
- National keyboard layout support
- Ultra compact and discrete, only 1.9" (48 mm) long

Applications

Employers:

- Monitor acceptable internet usage
- Monitor employee productivity
- Detect unauthorized access attempts
- Backup typed text
- Collect computer usage statistics

Parents:

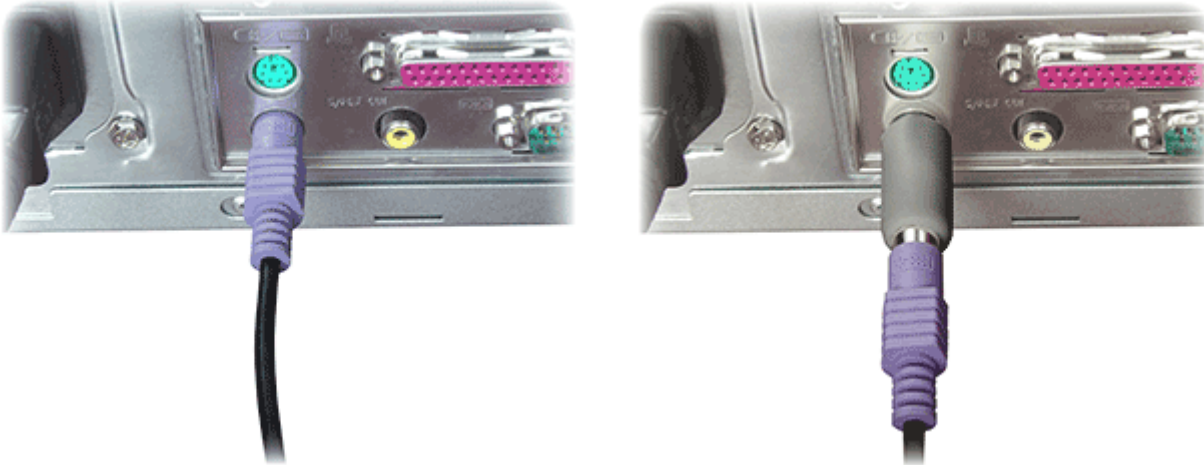
- Monitor your family's computer activity
- Protect your child from on-line hazards and predators
- Observe WWW, E-mail, and chat usage
- Save a copy of written documents

Requirements

- computer with PS/2 keyboard
- USB 1.1 or 2.0 port for using the USB Download Accelerator

Record Mode

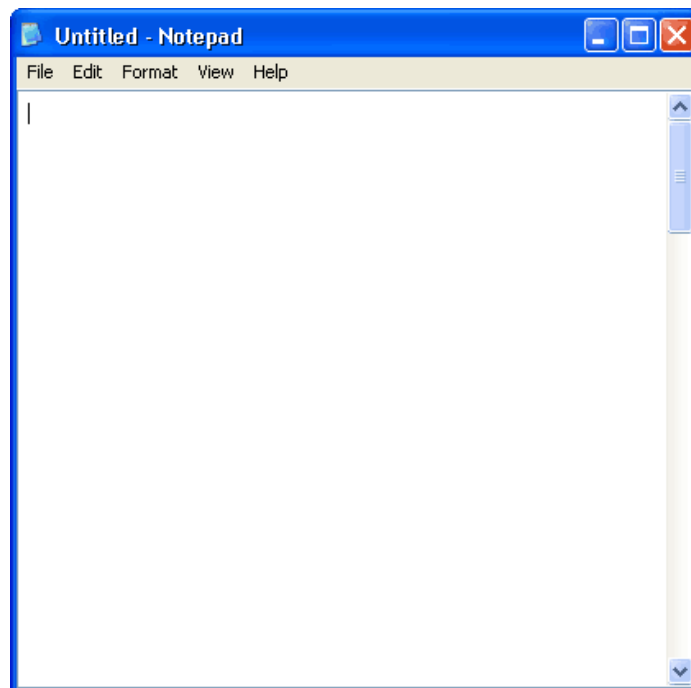
Installation of the KeyLlama USB Premier takes just seconds.



Simply plug it in between the PS/2 keyboard and the PS/2 port (purple color). No software or drivers are needed. The KeyLlama immediately starts recording everything that is typed. The device is completely stealthy.

Reading the Data (Text Menu)

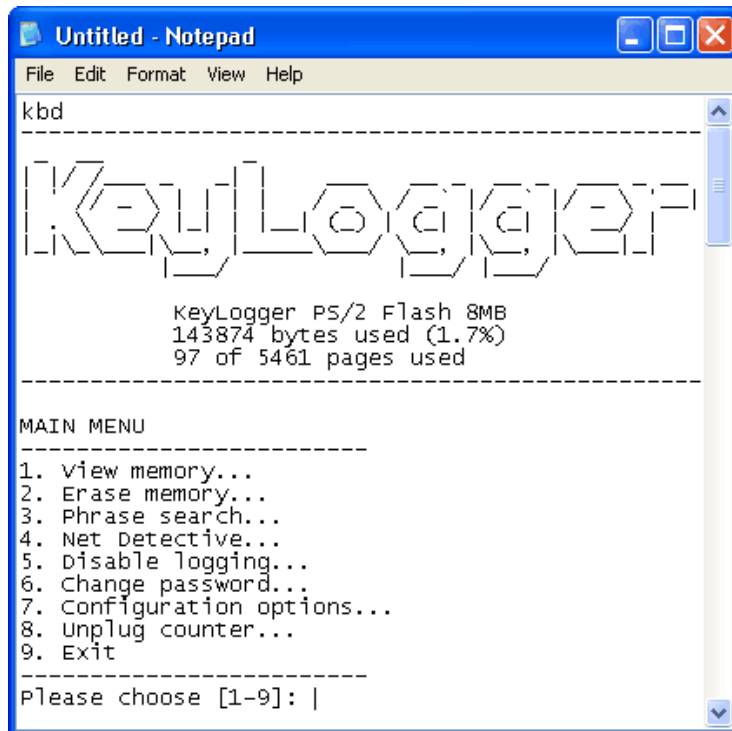
Once data has been captured, it may be retrieved by invoking a text-menu. The hardware keylogger and PS/2 keyboard should be connected in the same way, as in record mode. A text editor, such as Notepad, Word, or WordPad is required.



Each device has a built-in 3-key combination (by default K, B, D). Press these 3 keys at the same time to trigger the text-menu.



The KeyLlama PS/2 responds by typing a text-menu in the editor window.



Note: You must properly Exit before using any other application while in text-menu mode!

The displayed main menu shows a summary of memory usage in bytes and pages. The text menu offers a variety of view, search, and configuration options. Use the digit keys to surf around the menu. Below is a brief description of the main menu options.

MAIN MENU

-
- | | |
|------------------------------------|---|
| 1. View memory... | ▶ View logged data from internal memory |
| 2. Erase memory... | ▶ Erase memory log file |
| 3. String search... | ▶ Search memory log for phrase |
| 4. Net Detective... | ▶ Search for Web & E-mail addresses |
| 5. Disable logging... | ▶ Disable/enable logging |
| 6. Change password... | ▶ Change 3-key password for menu access |
| 7. Configuration options... | ▶ Advanced configuration options |
| 8. Unplug counter... | ▶ Menu access detector (unplug counter) |
| 9. Exit | ▶ Exit menu, return to record mode |
-

Please choose [1-9]:

1. View memory...

This menu allows viewing the memory log file. Log file pages are displayed in the text editor after selecting the start page (first, last, or manually selected page). The memory will be displayed with regard to the currently enabled national keyboard layout. Special keys are displayed using brackets, i.e. [Ent], [Esc]. To gain fast access to the entire log file, use the USB Download Accelerator.

Note: moving the mouse during data retrieve will decrease transmission speed. Do not change the active application while retrieving data.

2. Erase memory...

Use the erase menu to delete the log file. This can also be done in flash drive mode using the USB Download Accelerator.

3. String search...

Use this menu to search the log file for a particular phrase. Phrase length is 3-16 characters. The conducted search is not case sensitive.

4. Net Detective...

Use Net Detective to search for WWW, E-mail, and FTP addresses within the log file.

5. Disable/enable logging...

Use this menu to disable or enable keystroke logging in record mode.

6. Change password...

Allows changing the default 3-key combination for triggering the text menu. Only letter keys are allowed. The sequence in which password characters are entered does not matter. The new password will be stored to the internal flash disk.

7. Configuration options...

Enters the configuration sub-menu. Configuration options include special key logging and slow PC mode. Changing the special key log level results in logging of only text, logging text and function keys, or logging text and all special keys.

8. Unplug counter...

Displays the unplug counter status, a value increased each time the keylogger is powered-up, and reset after each menu access. This tool will help you determine, how many times the computer was powered up and if the keylogger was unplugged during computer usage. If the text menu is invoked each time you use the computer, this value should always show zero. A different value indicates the computer was used without your knowledge, or the keylogger was detached.

9. Exit

Exit from text menu and return to record mode. Settings will be stored. Be sure to exit playback mode using a menu option, otherwise the keylogger will remain in text menu mode.

Note: the menu is exited automatically after 5 minutes of keyboard inactivity.

Sub-menus offer more options. Most sub-menus are self-explanatory.

VIEW MEMORY

- 1. Start from first page ▶ Start viewing from first memory page
- 2. Start from last page ▶ Start viewing from last memory page
- 3. Start from selected page ▶ Start viewing from selected page
- 4. Main menu ▶ Return to main menu
- 5. Exit ▶ Exit menu, return to record mode

Please choose [1-5]:

VIEW MEMORY

- 1. Next page ▶ Jump to next memory page
- 2. Previous page ▶ Jump to previous memory page
- 3. Jump to selected page ▶ Jump to selected page
- 4. Main menu ▶ Return to main menu
- 5. Exit ▶ Exit menu, return to record mode

Please choose [1-5]:

ERASE MEMORY

- 1. Proceed - recorded data will be lost! ▶ Proceed with erasing
- 2. Cancel ▶ Return to main menu

Please choose [1-2]:

NET DETECTIVE

- 1. WWW addresses ▶ Search memory for WWW addresses
- 2. E-mail addresses ▶ Search memory for E-mail addresses
- 3. FTP addresses ▶ Search memory for FTP addresses
- 4. Main menu ▶ Return to main menu
- 5. Exit ▶ Exit menu, return to record mode

Please choose [1-5]:

CONFIGURATION OPTIONS

-
- | | |
|---------------------------|--------------------------------------|
| 1. Special key logging... | ▶ Configure special key logging |
| 2. Slow PC mode... | ▶ Slow PC mode (fix distorted menus) |
| 3. Restore defaults... | ▶ Restore default settings |
| 4. Main menu | ▶ Return to main menu |
| 5. Exit | ▶ Exit menu, return to record mode |
-

Please choose [1-5]:

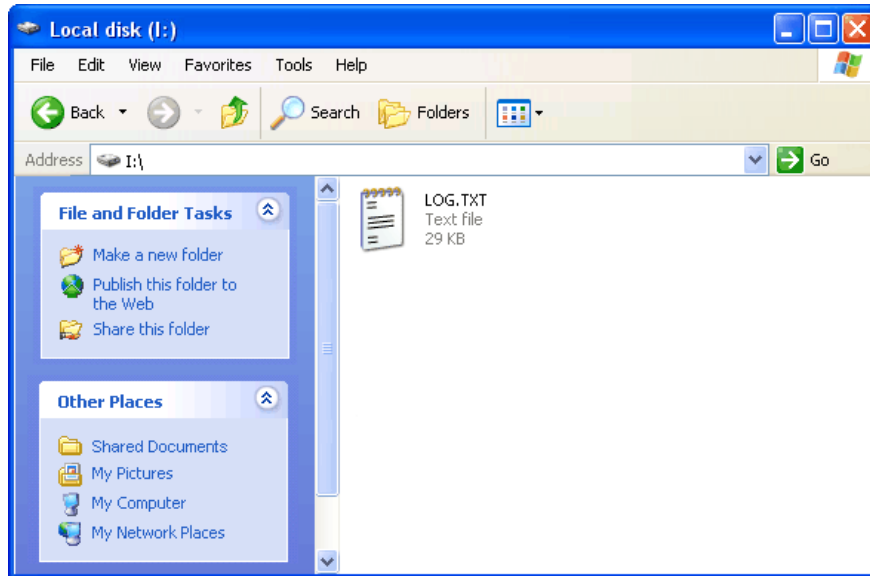
Using the USB Download Accelerator

The USB Download Accelerator provides an alternative data retrieve method to the text menu. The USB Download Accelerator allows super-fast retrieve of the entire data log file by switching to flash drive mode. A USB port is required.

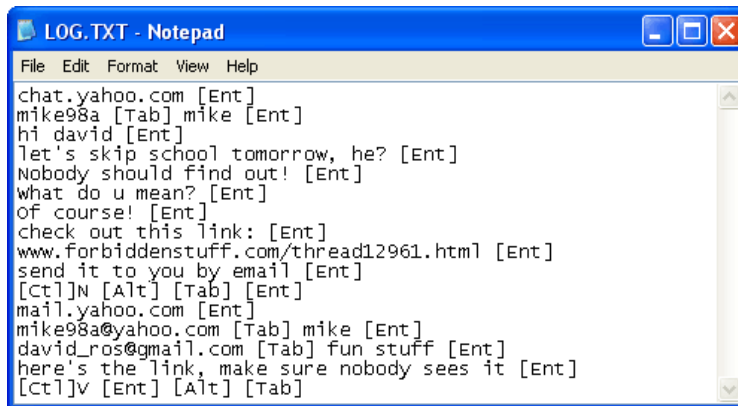


Connect the KeyLlama Flash PS/2 to any free USB port, using the provided USB Download Accelerator. Do not connect the PS/2 keyboard to the hardware keylogger. After a few seconds, the hardware keylogger will automatically be detected as a mass storage device.

The device will be visible as a new drive, for example I:. Use the systems file manager to browse this disk (for example Explorer).



The Flash Drive will contain the file LOG.TXT with a text log of all captured data. Keystroke data is formatted as it would appear on the screen, with special keys in brackets ([Ent], [Esc], [Del] etc.). This file can be viewed and searched with any text editor, such as Notepad or MS Word.



Flash Drive Options

Flash Drive mode allows several standard examination and maintenance procedures to be performed through the operation system. The most common operations are described below with MS Windows as an example operating system.

Phrase searching

Copy the log file LOG.TXT to the hard drive and restore record mode, by disconnecting the flash disk. Open LOG.TXT in any text editor, such as Notepad or MS Word. The entire log file may be viewed, or searched using the text editor built-in Find option (CTRL-F). To locate WWW & E-mail addresses, define the search phrase as 'www', '.com', '@' etc.

Clearing the memory

Simply delete the log.txt file. A new log file will be created when the keylogger is reinstalled.

The system should respond with disconnecting the flash disk. Connect the KeyLlama PS/2 in the PS/2 port to resume operation in record mode.

Clock Configuration (Forensic Models Only)

To configure the internal clock module, while in Flash Drive Mode, open the file named TIME_OLD.TXT. Update the file using the following format and then Save As: TIME.TXT

```
Year=2009
Month=4
Day=1
Hour=12
Minute=34
Second=56
Format=PM
```

Values must match the options below:

- Year sets the clock year value. (2000 to 2099)
- Month sets the clock month value. (1 to 12)
- Day sets the clock day value. (1 to 31)
- Hour sets the clock hour value. (1 to 12) or (0 to 23)
- Minute sets the clock minute value. (0 to 59)
- Second sets the clock second value. (0 to 59)
- Format sets the time format. (AM, PM, or 24) If AM is chosen, the 12-hour format is selected and the specified hour is treated as before noon. If PM is chosen, the 12-hour format is selected and the specified hour is treated as after noon. If 24 is chosen, the 24-hour format is selected and the specified hour is treated as 24-hour format.

Note: The time and date will be updated when the keylogger is reconnected. For precise time setting, it is a good idea to set the time a few minutes in advance, and restart the keylogger at the specified time.

National Keyboard Options

It is possible to enable a national layout for language-specific keyboards, such as French, German etc. This will allow national characters to be logged properly (including those with Alt Gr), such as ö, æ, ß, ó etc.

To enable a national layout, the appropriate layout file named LAYOUT.TXT must be placed on the flash disks root folder. The file must be copied in flash drive mode, because there is no access to the flash disk in record mode.

Layout files may be obtained by clicking the "Downloads" link on the KeyLlama.com website.

User Agreement

USE AGREEMENT: This Agreement is between KeyLlama and you, the user or installer of the KeyLlama keystroke recording device (the "Device"). Your installation or use of the Device indicates your consent to all of the terms of this Agreement. If you do not agree to any term of this Agreement, do not install the Device. Return the product with the plastic shell unopened to the place of purchase for a full refund.

PERMISSIBLE USES: The Device was designed and is to be used solely for parents to monitor what their children are doing on the computer and for businesses to monitor what their employees are doing on the computer (the "Permissible Uses").

IMPERMISSIBLE USES: The Device may not be used to violate the privacy rights of others, or to access or intercept electronic communications in violation of wiretap statutes, or to violate company regulations ("Impermissible Uses"). Impermissible Uses include, but are not limited to the following acts: retrieval of credit card information, passwords, personal and/or medical information, confidential and/or proprietary information, or trade secrets. Privacy and wiretapping laws change from time to time and vary from state to state. It is your responsibility to ensure that you are in compliance with federal, state, and local laws.

MUST POST NOTICE of MONITORING: If anyone other than you will be using the computer on which the Device is installed, you agree to post a notice visible to each user of the computer to the effect that (i) activities on this system may be monitored and recorded and (ii) that anyone using this system expressly consents to such monitoring and is advised that if such monitoring reveals possible evidence of unauthorized or criminal activity, such evidence may be provided to company or law enforcement officials.

SERIAL NUMBER FOR INVESTIGATING ILLEGAL ACTS: A unique serial number may be electronically stored in the Device to aid company and law enforcement officials in the investigation of any unauthorized or illegal acts that may be committed with the Device. You agree to permit KeyLlama to assist these officials by providing serial number and sales information and to download the data from the Device, as necessary in the course of the investigation. KeyLlama may request the assistance of its distributors and customers in providing information relating to the Device(s), and you agree to cooperate with such requests.

LICENSE: The Device contains software and firmware instructions (the "Program") on the internal microcontroller. The Device and Program are protected by copyright and other intellectual property laws. KeyLlama hereby grants you the right to: a) use the Program for the Permissible Uses in the United States for as long as you own the Device. b) view, copy, print and distribute copies of the output provided by the Device provided:(1) the output is used for informational purposes only; and (2) any electronic or hardcopy of the output (or portion thereof) includes the following notice: Program and format of the output provided thereby are provided under license from KeyLlama. All Rights Reserved. c) This license is limited to the rights above. Therefore, you are expressly prohibited from taking any other action with the Device, including but not limited to: (1) modifying, reverse engineering, de-compiling or disassembling the Device or the Program; (2) make any attempts to defeat the code protection which is in place on the internal microcontroller; (3) make any attempts to read or copy the Program; (4) attempt to cut open the casing around the Device; (5) sell, rent, lease, lend, or sublicense the Device or otherwise transfer your rights to another, unless the recipient agrees to the terms of the Agreement.

LIMITED WARRANTY: KeyLlama warrants that the Device, if provided by KeyLlama, is free from defects in materials and workmanship and for one year from the date of original purchase of the Device, provided the Device was not subject to accident, abuse, or improper use. **THIS IS A LIMITED WARRANTY AND ALL OTHER WARRANTIES ARE EXPRESSLY DISCLAIMED, INCLUDING BUT NOT LIMITED TO WARRANTIES OF NON-INFRINGEMENT OR IMPLIED WARRANTIES OF MERCHANTABILITY OR FITNESS FOR A PARTICULAR PURPOSE. KEYLLAMA'S SOLE LIABILITY FOR ANY BREACH OF THIS WARRANTY SHALL BE, IN KEYLLAMA'S SOLE DISCRETION, TO REPAIR OR REPLACE YOUR DEVICE.** KeyLlama will honor this warranty only if you inform KeyLlama of your problem with the Device in writing during the applicable warranty period including evidence of the date the Device was originally purchased. This warranty is void if you violate the terms of this Agreement. To invoke the warranty, complete the warranty form found at www.keyllama.com. Send the completed warranty form, the defective device, and a copy of the purchase receipt or other evidence of the purchase date, prepaid, to: KeyLlama, 131 W. 18th St. Holland, MI 49423. Include your name, address, and telephone number. KeyLlama will repair or replace the device and return it to you at its expense. If the device is working properly and the password stored inside the Device does not match the password provided on the Warranty Form, you will be charged \$10 for resetting the password. The Device will be returned to you along with the new password.

FORGOTTEN PASSWORD: If you have forgotten your password, send the Device, prepaid, to: KeyLlama, 131 W. 18th St. Holland, MI 49423. Include your name, address, and telephone number. It is recommended that you use our on-line warranty form. KeyLlama will reset your password and charge you \$10 for this service. The Device will be returned to you along with the new password at KeyLlama's expense.

INDEMNIFICATION: You agree to defend, indemnify, save and hold KeyLlama harmless from any and all claims, demands, liabilities, costs or expenses including direct, indirect, incidental or consequential damages and reasonable attorney's fees arising from use or installation of the Device, including claims of statutory violations, violation of right to privacy, [S5] loss of business, or loss of profit.

LIMITATION OF LIABILITY: UNDER NO CIRCUMSTANCES AND UNDER NO LEGAL THEORY, WHETHER TORT, CONTRACT, OR OTHERWISE, SHALL KeyLlama OR ITS SUPPLIERS OR RESELLERS BE LIABLE TO YOU OR ANY OTHER PERSON FOR ANY INDIRECT, SPECIAL, INCIDENTAL, OR CONSEQUENTIAL DAMAGES OF ANY CHARACTER INCLUDING, WITHOUT LIMITATION, DAMAGES FOR VIOLATION OF THE RIGHT TO PRIVACY, VIOLATION OF WIRETAPPING STATUTES, LOSS OF GOODWILL, WORK STOPPAGE, COMPUTER FAILURE OR MALFUNCTION, OR ANY AND ALL OTHER DAMAGES OR LOSSES ARISING FROM USE OR INSTALLATION OF THE DEVICE. THE TOTAL LIABILITY OF KeyLlama IS THE PURCHASE PRICE OF THE DEVICE, EVEN IF KeyLlama SHALL HAVE BEEN INFORMED OF THE POSSIBILITY OF SUCH DAMAGES, OR FOR ANY CLAIM BY ANY THIRD PARTY.

EXPORT CONTROLS: You must adhere to export laws regarding the export of software using encryption functionality, which change from time-to-time. At minimum, you may not export or re-export the Device or the Program (i) into (or to a national or resident of) Cuba, Iraq, Libya, Sudan, North Korea, Iran, Syria or any other country to which the U.S. has embargoed goods; or (ii) to anyone on the U.S. Treasury Department's list of Specially Designated Nationals, the U.S. Commerce Department's Table of Denial Orders, or any other person or entity denied export activity by the United States Government.

GOVERNING LAW: This Agreement shall be governed in all respects by the laws of the United States and the State of Michigan, except for conflict of laws provisions. The parties agree that for any dispute, controversy or claim arising out of or in connection with this Agreement, venue and personal jurisdiction shall be in the federal or state court with competent jurisdiction located in Ottawa County, Michigan.

SEVERABILITY: The provisions of this Agreement will be deemed severable, and the invalidity or unenforceability of any provision will not affect the validity or enforceability of another provision hereof.

ENTIRE AGREEMENT: This Agreement constitutes the entire agreement and understanding between the parties and may be amended only by a writing executed by both parties.

All Materials are the property of KeyLlama. Copyright 2007 KeyLlama. All Rights Reserved.

-- END OF USER AGREEMENT --